

COMPAGNIE

LES OMBRES PORTÉES

NATCHAV

THÉÂTRE D'OMBRES

COMPAGNIE

LES OMBRES PORTÉES

NATCHAV

THÉÂTRE D'OMBRES



# NATCHAV

## Compagnie Les ombres portées

### Shadow theatre with live music

Show with no spoken

Suitable for all ages, from 8 years old

Running time: 1 hour

Premiered on December 2<sup>nd</sup> & 3<sup>rd</sup> 2019 at La Maison de la Culture de Nevers Agglomération

**Idea and design:** Les ombres portées

**Puppets and lights:** 4 puppeteers (alternating)  
Erol Gülgönen, Florence Kormann, Frédéric Laügt, Marion Lefebvre, Christophe Pagnon, Claire Van Zande

**Music and sound effects:** 2 musicians (alternating)  
Séline Gülgönen (clarinet), Jean Lucas (trombone, accordion), Simon Plane (trumpet, tuba, accordion, percussion), Lionel Riou (trumpet or trombone, accordion, percussion)

**Lighting:** 1 lighting director (alternating)  
Nicolas Dalban-Moreynas, Thibault Moutin

**Sound:** 1 sound director (alternating)  
Frédéric Laügt, Yaniz Mango, Corentin Vigot

**Costumes:** Zoé Caugant

**Touring:** Claire Van Zande

Margot Chamberlin helped build the puppets and performed with us until 2023.

**With help from:** Léo Maurel (sound effect machines), Baptiste Bouquin (outside ear), Jean-Yves Pénafiel (outside eye)

**Also thanks to:** Francine Benotman, Jacques Bouault, Stéphane Revelant, Elsa Vanzande

*We dedicate this show to Olivier Cueto, a cherished member of the company who passed away in March 2020. He imagined, created and performed this show with us until the very end.*

# THE SHOW

*In the darkness of the early morning, the Natchav circus arrives to town. Its caravan of trailers and lorries take their place in the central square. The sledge gang begins its concert of steady blows, pounding the first stakes into the ground; the sound of the immense canvas whips through the air as the tent poles are hoisted to the sky.*

*Suddenly, out of concern for security, the authorities order the circus to leave, forcing them onto a vacant lot in the outskirts of town. Following a scuffle, one of the acrobats is arrested and jailed for contempt and rebellion. So, the circus troupe, along with the other prisoners, decide to carry out a spectacular escape, one full of ingenuity and twists and turns...*

Through an extraordinary play of shadow and light, *Natchav* (go away, run away in Rromani) recounts a story in which, on the margins of society, two fundamentally opposed worlds mingle — that of the circus and of the prison.

It is a story of intrigue that unfolds through a dynamic scenography. With no spoken dialogue, the visuals and music generated and performed live guide the narration, creating an original and provocative composition between reality and fantasy.

# ARTISTIC STATEMENT

*Natchav* tackles the notion of freedom, an idea largely diminished due to overuse, so much so as to be left devoid of meaning by a world that controls, counts and submits.

With its roots in the preservation of a lifestyle of nomadism, independence, community, movement and play, the circus invites audiences on a journey into the extraordinary, the wonderful... Time is measured in the moment. There is even an expression in circus jargon: "the point of suspension", which describes the moment when an acrobat is free from the binds of laws, including that of gravity. In contrast, the primary purpose of a prison is the deprivation of liberty: it is there to punish and confine, with all that this implies in terms of permanent constraints, lack of space, solitude, inactivity and monotony. In addition to the lack of space, there is an excess of time.

The current difficulties facing most circuses reveal a fundamental discord between their way of life and the societies they live amongst: the progressive privatisation of public spaces prevents these communities from finding their place, the growing number of safety regulations generates changes and costs that they may not be able ensure... Moreover, borders are increasingly being conceived as tools for controlling the movement of people, whereas travel and nomadism look past identities and states.

The freedom that these circuses defend and which we want to explore with *Natchav* is a sentient and infectious idea; it is a point of departure, a perpetual movement inextricable to anyone who wants to feel alive.





## A SCENOGRAPHY IN MOVEMENT

Following the French-style puppet stand of *Pekee-Nuee-Nuee* and the large-scale production of *Les Somnambules*, the company Les ombres portées continues its exploration of the world of shadow theatre with its third creation.

In an attempt to break with the linear nature of image-based narratives, this creation plays with a scenography aimed at freeing the audience from the traditional frontal character of shadow theatre.

On stage, in full view of the audience, the performers illuminate and manipulate the different sets and characters of the narration. Installed on mobile supports, the prison, cells, marquee and others are brought and arranged on stage as the story unfolds — their shadows projected in large on a panoramic screen at the back of the stage.

The spectator's eyes are drawn from one direction to the other by the projection of the shadows, the theatrical play of the puppeteers and the musicians on the stage.

These interwoven narratives participate in a multi-layered theatrical and scenic composition, allowing the audience to witness the making of the story as it happens.



## SHADOW AND LIGHT

Both of the worlds encountered in *Natchav* lend themselves particularly well to the techniques of shadow theatre.

The world of the prison is a setting of opacity, secrecy and silence. It is never revealed what really happens within the cells. The truth is hidden behind a maze of walls and bars. The shadows reflect this dark, obscure and hidden dimension. What is shown of the prison is revealed through various angles and vantages. Cracks, prison bars, peepholes and cameras act as filters, providing an intimate glimpse inside.

On the other hand, in the dreamlike world of the circus, everything is visible: from the arrival of the caravans and the rigging of the tent to the smallest details of the acts themselves under the spotlight. The physical manipulation of the sets and characters in full view of the audience captures this raw exposure and provokes a feeling of tension in the audience comparable to that experienced during a real-life circus performance.

## A CINEMATOGRAPHIC MONTAGE

The treatment of the plot is borrowed in part from the narrative techniques of noir novels and film narratives, mixing suspense with an array of twists and turns.

Like a camera, light serves as a guide for the narration, offering spectators a myriad of perspectives. Panning shots, zooms and cuts rhyme with the narration and create a dynamic reading of the story like a film shot live using multiple cameras.

## LIVE MUSICAL ACCOMPANIMENT

The music, played on stage live and in full view of the audience by two multi-instrumentalists, features original compositions, musical improvisation and sound effects. Partly inspired by traditional circus themes, the musical score expands on the genre by adding a cinematographic dimension. As with live film concerts, the music actively participates in the narration and highlights or creates tension and surprises.

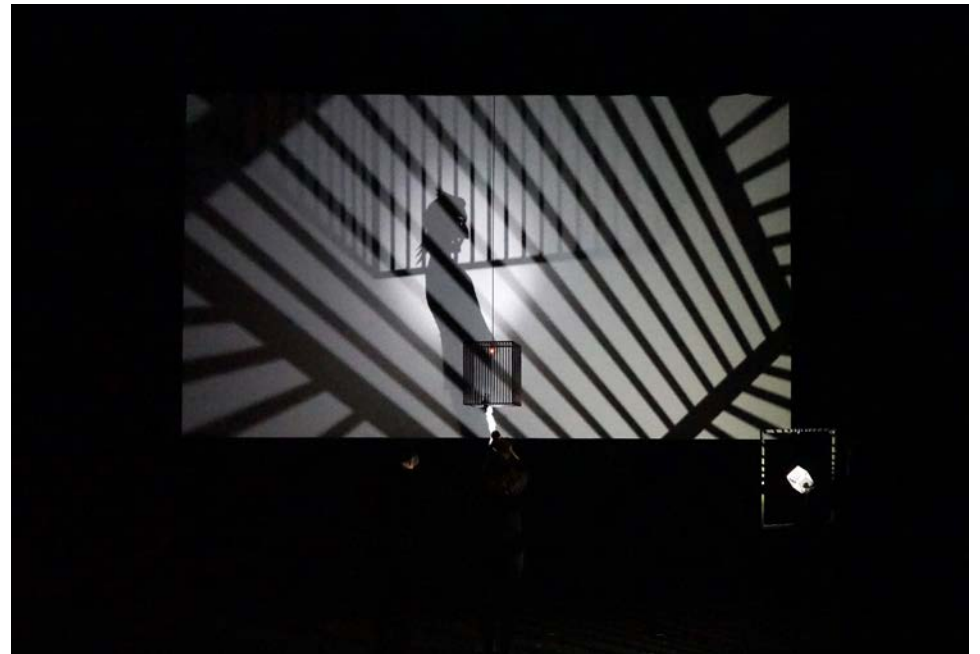
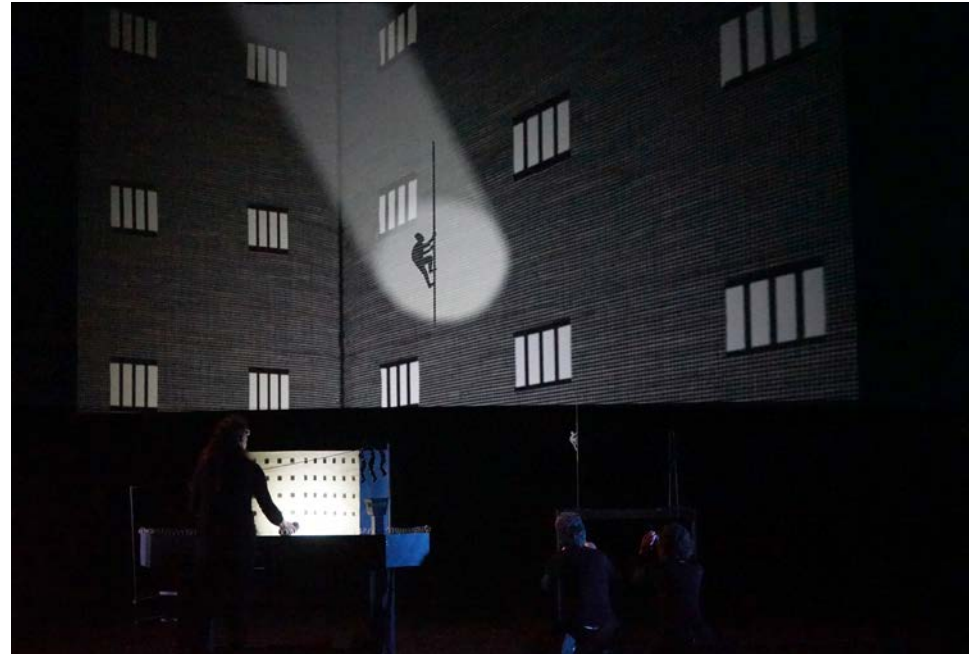
The work of a lutherie was incorporated to design singular instruments and sound effects, which act as acoustic counterparts to the visual devices.











Performance photos



Set decor and puppets







# STAGE PLAN

For the staging of the show, a large cyclorama is placed at the back of the stage. It is framed by borders at the bottom, on the sides and at the top.

Several large-scale mobile sets are used to represent the different scenes of the narration. These sets and the puppets are manipulated live by 4 puppeteers and their shadows are projected onto the large screen at the back of the stage. As the show progresses, the sets are brought to and from the wings to the stage.

Two musicians, playing live side by side, are positioned downstage right.

Leg drapes are required, with either Italian or German front curtain openings depending on the theatre.

## STAGE REQUIREMENTS

The audience is to be seated directly in front of the stage.

Total darkness is required for the room.

The stage must be raised or at ground level.

The stage must be covered in black vinyl dance flooring.

Stage dimensions (minimum) // German stage curtain opening (fly curtain)

Wall-to-wall clearance: 12.5 m

Depth: 9.5 m

Height to lighting rig: 6 m

Proscenium width: 9 m

Stage dimensions (ideal) // Typical stage curtain opening (swag curtain)

Wall-to-wall clearance: 16 m

Depth: 12 m

Height to lighting rig: 7.5 m

## MAIN TECHNICAL INFORMATION

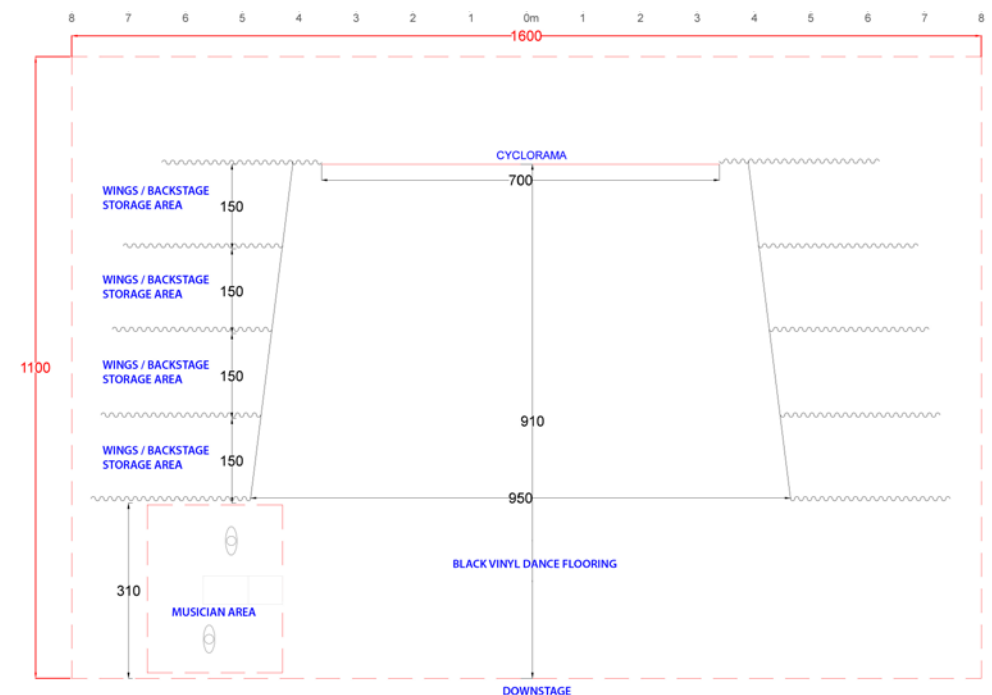
**Touring company:** 9 members (4 puppeteers, 2 musicians, 1 lighting technician, 1 sound technician, 1 tour manager)

**Running time:** 1 hour

**Capacity for all-ages performances:** between 250 and 400 people (to be adjusted according to the seating configuration)

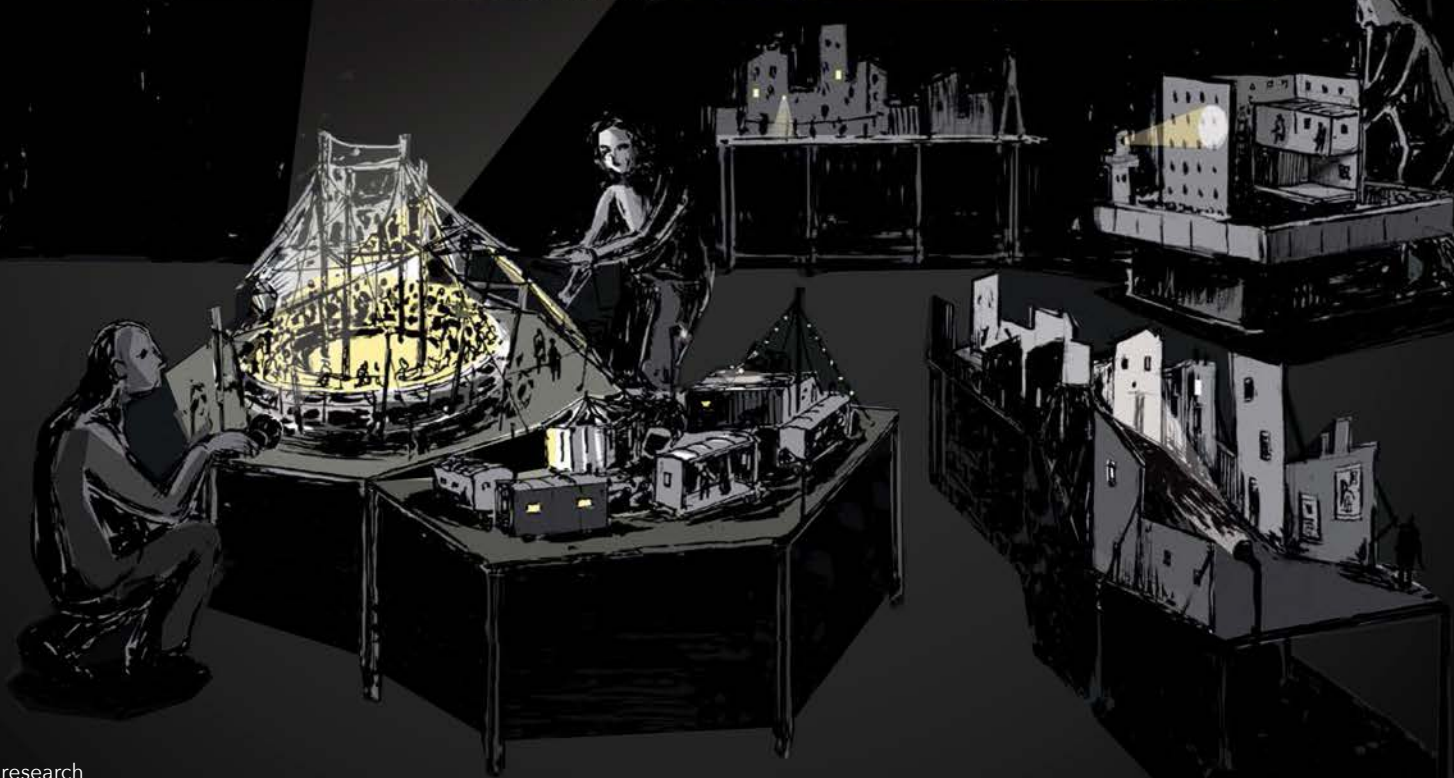
**Capacity for school performances:** between 250 and 300 people maximum

**Installation:** Advance set-up of drapery, lighting and sound system required + 4 installation and fitting sessions.



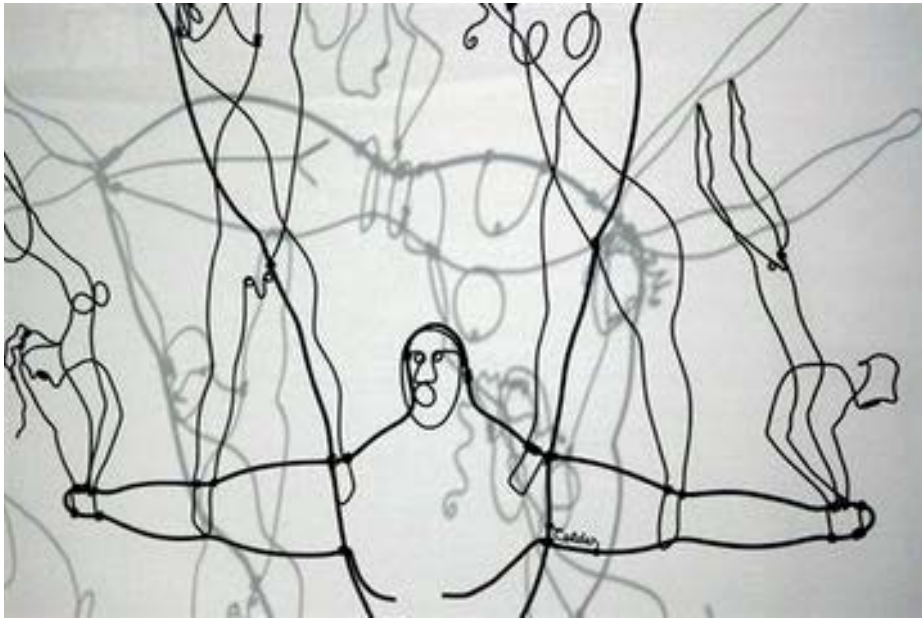
Typical stage layout



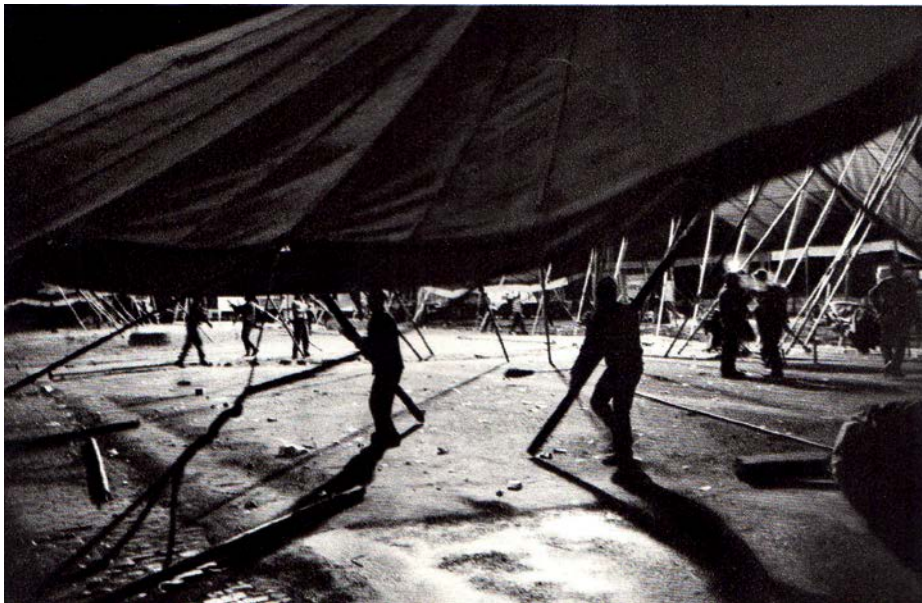




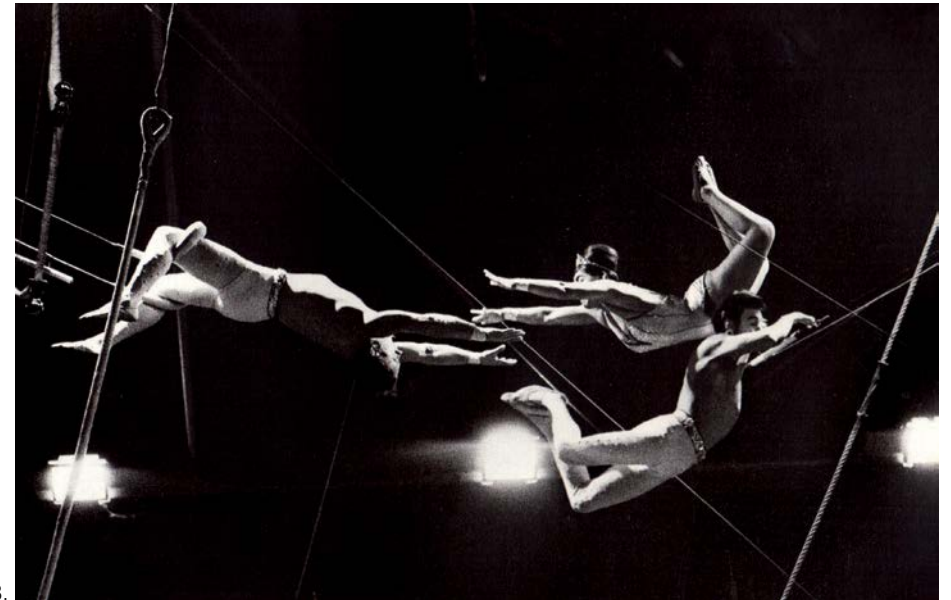
# SOURCES AND INSPIRATIONS



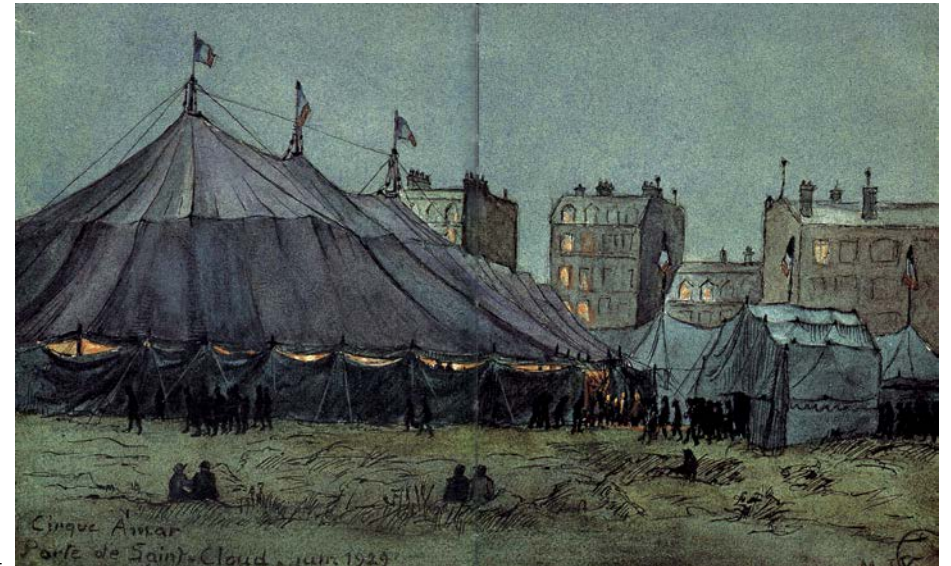
1.



2.



3.



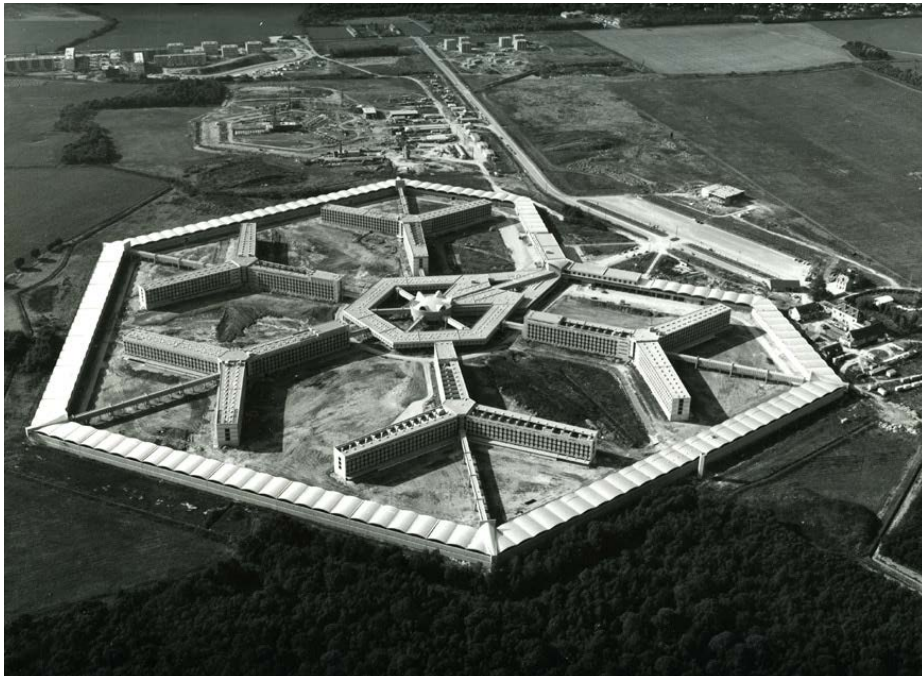
4.

1. *The Brass Family*, brass wire, 1929, Alexander Calder
2. *Breaking Down the Grand Cirque de France During the Night*, 1963, Paul de Cordon, *Instants de Cirque*
3. *Un passage des Palacios*, Ringling Brother and Barnum & Bailey Circus, 1963, Paul de Cordon
4. *The Cirque Amar at Porte de St Cloud (Paris) in June 1929*, the Vesque Sisters

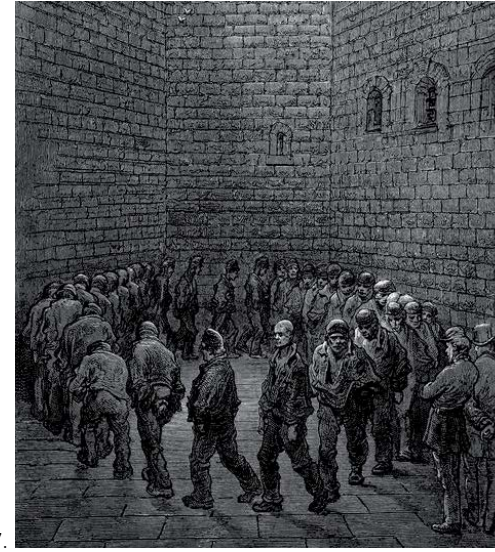




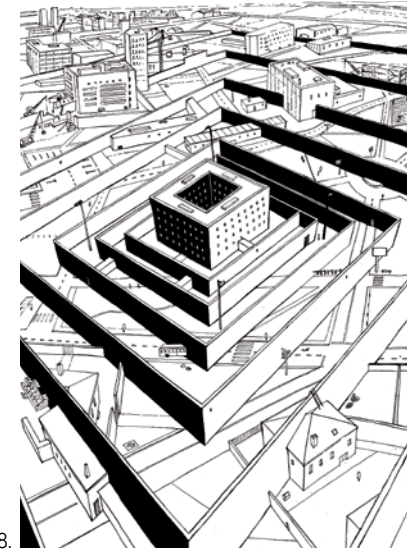
5.



6.



7.



8.

## BIBLIOGRAPHY

*Dictionnaire de la langue du cirque*, Agnès Pierron, ed. Stock, 2003  
*Architectures du Cirque des origines à nos jours*, Christian Dupavillon, ed. Le Moniteur, 2001  
*Les Baltringues*, Ludovic Roubaudi, ed. La Dilettante, 2002  
*The Circus Book: 1870s–1950s*, Noel Daniel, Taschen, 2010  
*En piste, Le cirque en images des sœurs Vesque*, Découvertes Gallimard, 1992  
*Le cirque en images*, Marthe and Juliette Vesque, G.P. Maisonneuve et Larose, 1977  
*Une vie de cirque*, Jérôme Medrano, ed. Arthaud, 1983  
*La fabuleuse histoire du cirque*, Pascal Jacob, 2002  
*Au pied du mur*, ed. L'Insomniaque, 2000  
*No Beast So Fierce*, Edward Bunker, 1973  
*L'Envolée*, Serge Coutel, 1985  
*Un jardin à la cour*, Hafed Benotman, 2016  
*Révolte à perpétuité*, Daniel Koehl, 2002  
*Soledad Brother*, George Jackson, 1970  
*Bruno Sulak*, Pauline Sulak, ed. Carrère 1985  
*Monstres en cavale*, Cloé Mehdi, ed. Le Masque, 2014  
*A ceux qui se croient libres*, Nadia Ménenger, ed. L'Insomniaque, 2009

## FILMOGRAPHY

*Man on a Tightrope*, Elia Kazan, 1953  
*The Circus*, Charlie Chaplin, 1969  
*Freaks*, Tod Browning, 1932  
*Parade*, Jacques Tati, 1974  
*People Who Travel*, Jacques Feyder, 1938  
*Planète cirque*, D Auclair and L Chevallier, documentary series, 1992–1993  
*Calder's Circus*, Carlos Vilardebo, 1961  
*I clowns*, F Fellini, 1971  
*Sawdust and Tinsel*, I Bergman, 1953 I. Bergman 1953  
*Runaway train*, Konchalovski, 1985  
*The Hole*, Jacques Becker, 1960  
*Animal Factory*, Steve Buscemi, 2000  
*Omblin*, Stéphane Cazes, 2012  
*Down by law*, Jim Jarmusch, 1986  
*A Man Escaped*, Robert Bresson, 1956  
*Freedom for Us*, René Clair, 1931  
*Starred Up*, David Mackenzie, 2014

5. Screenshot from the film *Le Trou* de Jacques Becker, 1960

6. Aerial view of the prison in Fleury-Mérogis, Cliché Avia-Taxi

7. *Newgate Prison Courtyard*, Gustave Doré, 1872

8. Illustration for the newspaper *L'Envolée*, Erol Gülgönen



# THE COMPANY

Les ombres portées was created in 2009 by a group of individuals coming from different worlds (music, scenography, construction, drawing, photography, etc.) who sought to bring their talents together and work collectively. For any given project, up to a dozen members, artists and technicians may be involved.

The company revisits the art of shadow theatre with an original and innovative poetical take offered in the form of shows for all ages. Accompanied by live music and without any spoken dialogue, each project is an opportunity to develop a singular scenographic proposal and musical aesthetic that is always in line with the message being conveyed.

Approaching its work from a collective and collaborative stance, the company invests a considerable amount of time into creating each production. It also offers numerous shadow theatre workshops for all ages.

*Pekee-nuee-nuee* (2011) and *Les Somnambules* (2015) have been performed over 150 times in France and around the world (Germany, Netherlands, Switzerland, South Korea, etc.), and continue to tour today. *Natchav* (2019) is the company's third collective creation.

Since September 2020, the company has been an associated artist with the theatre La Faïencerie de Creil, being part of its artist roster for the last three seasons. It has also been registered with the DRAC Île-de-France since 2020 and the Région Île-de-France since 2024.



*The greatest stars of the flying trapeze circus, Ringling Brother and Barnum & Bailey Circus, 1935. Colour-adjusted image*



# TOURING

## 2019 - 2020 SEASON

Maison de la Culture de Nevers Agglomération • Le Théâtre, scène conventionnée, Laval • La Minoterie, scène conventionnée, Dijon • TJP, CDN Strasbourg – Grand Est • Théâtre Sarah Bernhardt avec l'Espace Germinal de Fosses, Goussainville • Espace Lino Ventura, Garges-lès-Gonesse • Espace des Arts, scène nationale, Chalon-sur-Saône

## 2020 - 2021 SEASON

Espace Marcel Carné / service culturel de La Norville, Saint-Michel-sur-Orge • Théâtre Charles Dullin, Le Grand-Quevilly • Les Rotondes, Luxembourg • À La Faïencerie, scène conventionnée, Creil • Théâtre Sénart, scène nationale, Lieusaint

## 2021 - 2022 SEASON

Théâtre Roger Barat, Herblay • Festival Mondial des Théâtres de Marionnettes, Charleville-Mézières • Théâtre du Cormier, Cormeilles en Parisis • La Ferme du Buisson, scène nationale, Noisiel • Festival franco-allemand Loostik, Forbach • Théâtre des Quatre Saisons, Gradignan • Théâtre Chevilly-Larue André Malraux • L'Hectare, Vandôme • MA scène nationale – Pays de Montbéliard • La Mouche, Saint-Genis-Laval • Le Triangle / Festival Compli'Cité en partenariat avec Momix, Huningue • Festival Panoptikum, Nuremberg (Germany) • Les Bords de Seine, Espace culturel Alain-Poher, Ablon-sur-Seine • Maison de la Culture de Bourges • Le Carré, scène nationale, Château-Gontier • La Ferme de Bel Ebat, Guyancourt • Le Bateau Feu, scène nationale, Dunkerque • DSN, Dieppe scène nationale • Théâtre de Nîmes Bernadette Lafont / Odéon • Théâtre Le Dôme, Saumur • Le Dak, Schaan (Liechtenstein)

## 2022 - 2023 SEASON

Théâtre au Fil de l'eau, Pantin • Pôles en scènes à l'Espace Albert Camus, Bron • Escher Theater, Esch-sur-Alzette (Luxembourg) • Cité musicale à la BAM, Metz • acb, scène nationale, Bar le Duc • CIRCA, Auch • Espace d'Albret, Nérac • TSQY, Scène nationale, Saint Quentin en Yvelines • Théâtre Antoine Vitez, Ivry-sur-Seine • Le Sablier - Centre National de la Marionnette, Iffs • La Halle Ô Grains, Bayeux • Centre culturel Robert Desnos avec la Scène nationale de l'Essonne, Ris-Orangis • Théâtre de l'Espace - Les 2 scènes, scène nationale de Besançon • CCAM, scène nationale, Vandoeuvre-lès-Nancy • Théâtre Massalia, scène conventionnée, Marseille • Théâtre Le Sémaphore, scène conventionnée, Port-de-Bouc • Salle Jacques Brel avec Fontenay en scènes, Fontenay-sous-Bois • Théâtre Gérard-Philipe, Champigny-sur-Marne • Théâtre Jean Arp, scène conventionnée, Clamart

## 2023 - 2024 SEASON

Salle du Lignon, Vernier (Switzerland) • Théâtre & cinéma, Choisy-le-Roi • Le Vilar, Louvain-la-Neuve (Belgium) • Le Manège, scène nationale de Reims • Théâtre des Aspres, Thuir • TNP, Théâtre National Populaire, Villeurbanne • Théâtre Gérard Philipe, CDN, Saint-Denis • Centre des arts, Enghien-les-Bains • Le Grand R, scène nationale, La Roche-sur-Yon • 30CC with Boze Wolf Festival, Louvain (Belgium) • Cultural Center of Bruges (Belgium)

**For a detailed agenda, please take a look at our website.**





## SUPPORT

### Co-production:

Maison de la Culture de Nevers Agglomération • La Minoterie, Dijon • Le Théâtre, scène conventionnée de Laval • Théâtre-Sénart, scène nationale • TJP, CDN Strasbourg - Grand Est

### Artist-in-residence programmes and assistance:

Espace Périphérique - Mairie de Paris - Parc de la Villette • Festival Momix et le CREA, scène conventionnée Jeune Public d'Alsace, Kingersheim • La Fabrique, Messeugne • À La Faïencerie, scène conventionnée, Creil • La Ferme du Buisson, scène nationale, Noisiel • La Fonderie, Le Mans • La Maison des Enfants du Quercy, Le Bouyssou • Le TANDEM, scène nationale, Arras-Douai • Le Tas de Sable, Amiens • MA scène nationale – Pays de Montbéliard • Théâtre La Licorne, Dunkerque

## FUNDING

Ministère de la Culture et de la Communication - DRAC Île-de-France • Région Ile-de-France

## CONTACTS

Compagnie Les ombres portées  
7 rue Saint-Luc  
75018 Paris  
FRANCE

[compagnie@lesombresportees.fr](mailto:compagnie@lesombresportees.fr)

[www.lesombresportees.fr](http://www.lesombresportees.fr)

**Touring:** Claire Van Zande  
[claire@lesombresportees.fr](mailto:claire@lesombresportees.fr)  
Phone: +33 (0)6 59 42 66 93

**Technical contact:** Erol Gülgönen  
[technique@lesombresportees.fr](mailto:technique@lesombresportees.fr)  
Phone: +33 (0)6 61 17 51 46

**Workshops:** Séline Gülgönen  
[mediation@lesombresportees.fr](mailto:mediation@lesombresportees.fr)  
Phone: +33 (0)6 37 12 54 83